

RPM

Real-time Production Monitor

Amtech's RPM offers an affordable, easy to use system for any size plant. This "out of the box" machinery interface can be retrofitted to any machine, regardless of age, utilizing industry-standard hardware.

REAL-TIME SCHEDULING:

RPM's real-time production updates improve the accuracy of your schedule. Incorporate your plant's current setup and run efficiencies along with the production into the "live" schedule and see what impact it has on your orders. Develop tighter schedules more quickly and improve your on-time deliveries with "rules-based" scheduling logic.

ACCURATE REPORTING:

Since RPM's photo eyes automatically take care of reporting elapsed time spent on setup, run, and downtime modes, your operators spend less

time keying in data and more time keeping machines running efficiently. RPM's mandatory sheet reconciliation feature gives you "cradle to grave" waste tracking.

VIRTUAL DASHBOARD:

At each machine RPM gives your employees real time feedback on setup time and run speeds verses your goals. The virtual dashboard shows multiple management and employees full visibility to all jobs currently on each machine. Drill down to statistics for the shift, day, week and month to date for up time, down time and setup and run efficiency.

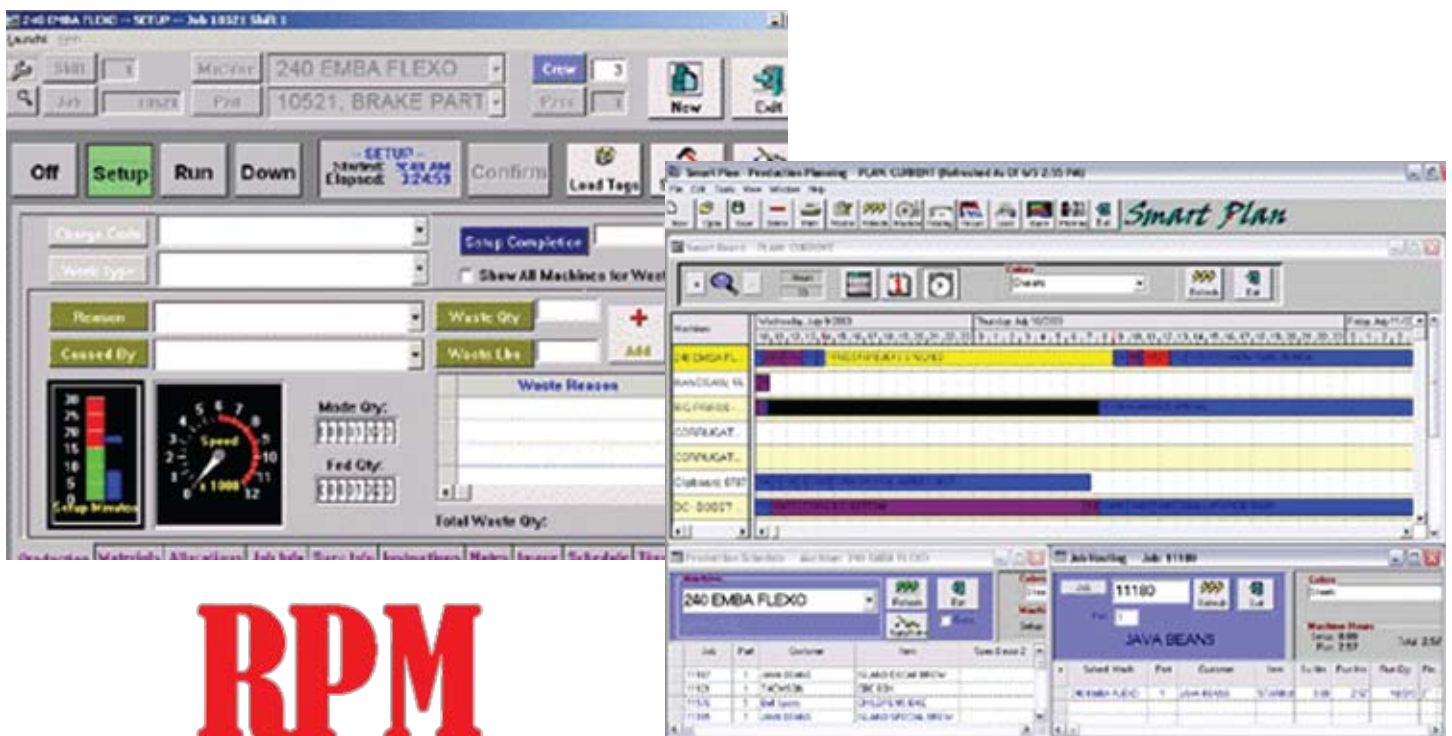
ADDITIONAL BENEFITS:

Once RPM is up and running your company can benefit from the ability to estimate and/or schedule based on ACTUAL speeds. RPM also includes a Gantt chart add-on to Smartplan,

allowing you to see the big picture by viewing the whole schedule board in one window.

TOP TEN
reasons to install RPM

10. Accurate reporting
9. Tight job costing
8. Estimate using actual speeds
7. Scheduling using actual speeds
6. Gantt chart in Smartplan
5. Mandatory waste reconciliation
4. Downtime reconciliation
3. Virtual Dashboard
2. Standards (goals) visibility
1. Real-time means Real Results!



RPM